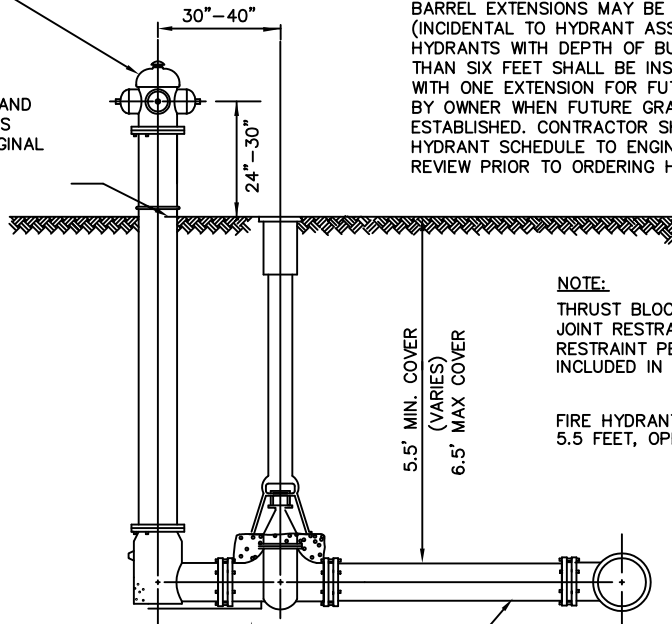


MUELLER CENTURION 200  
STEAMER CONNECTION MUST  
FACE STREET.

GRADE LINE ON HYDRANT AND  
VALVE BOX WILL BE SET AS  
SHOWN ON PLANS, AT ORIGINAL  
GROUND SURFACE OR AS  
DIRECTED BY ENGINEER.

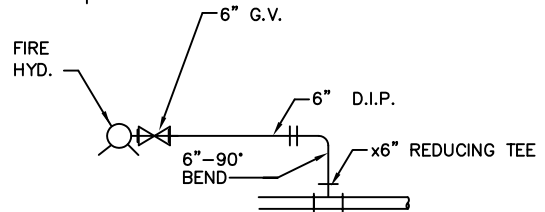


**NOTE:**  
TO REACH GRADE LINE NOTED ON PLANS,  
BARREL EXTENSIONS MAY BE REQUIRED.  
(INCIDENTAL TO HYDRANT ASSEMBLY)  
HYDRANTS WITH DEPTH OF BURY GREATER  
THAN SIX FEET SHALL BE INSTALLED  
WITH ONE EXTENSION FOR FUTURE REMOVAL  
BY OWNER WHEN FUTURE GRADE IS  
ESTABLISHED. CONTRACTOR SHALL FURNISH  
HYDRANT SCHEDULE TO ENGINEER FOR  
REVIEW PRIOR TO ORDERING HYDRANTS.

**NOTE:**  
THRUST BLOCKS WILL NOT BE ALLOWED.  
JOINT RESTRAINT WILL BE NECESSARY.  
RESTRAINT PER CITY STANDARDS & COST IS  
INCLUDED IN COST OF HYDRANT INSTALLATION/EXTENSION.

FIRE HYDRANTS W/ VALVE: MUELLER A423,  
5.5 FEET, OPEN LEFT W/ STORZ PUMP.

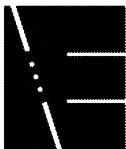
6" GATE VALVE  
AND CAST IRON  
VALVE BOX  
PLACE VALVE BOX ON  
12" CRUSHED STONE



**SCHMATIC OF HYDRANT  
PARALLEL TO MAIN**

## STANDARD FIRE HYDRANT

NO SCALE CROSS SECTION



ENGINEERING TECHNOLOGIES CORPORATION  
207 EAST MICHIGAN AVENUE  
SALINE, MI 48176  
Tel: 734.944.2020, Fax: 734.944.2424  
etc@etcinc.com, www.etcinc.com

**STANDARD FIRE HYDRANT**  
NOT TO SCALE

**HANDY TOWNSHIP STANDARD DETAILS**  
DECEMBER 2005

**DRAWING NO.**

**W-1**  
1 OF 8